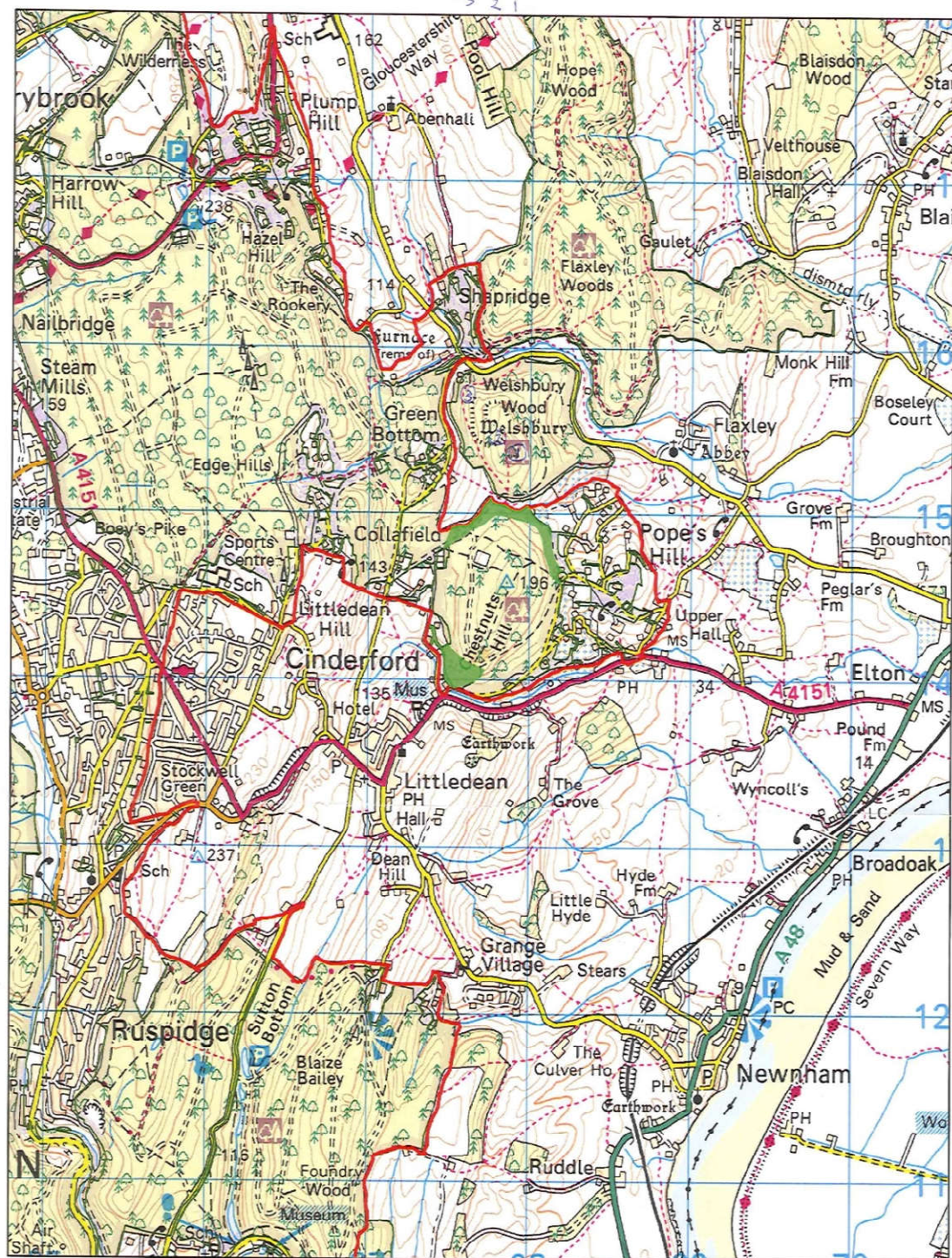


## **WELSHBURY HILL FORT, FOREST OF DEAN, GLOUCESTERSHIRE**

### **WORK CARRIED OUT BETWEEN 28 FEBRUARY 2015 AND 27 FEBRUARY 2016**

**Undertaken on behalf of an informal working partnership between University of Gloucestershire, Forestry Commission, Historic England and the Gloucestershire County Council Archaeology Service.**

## **ILLUSTRATIONS**



  
Forestry Commission  
England

**Forest Of Dean**

Forest stands where SC p1850 or older are recorded

Scale 1:30,000

**Legend**

- SC p1850 or older
- Statutory Forest of Dean

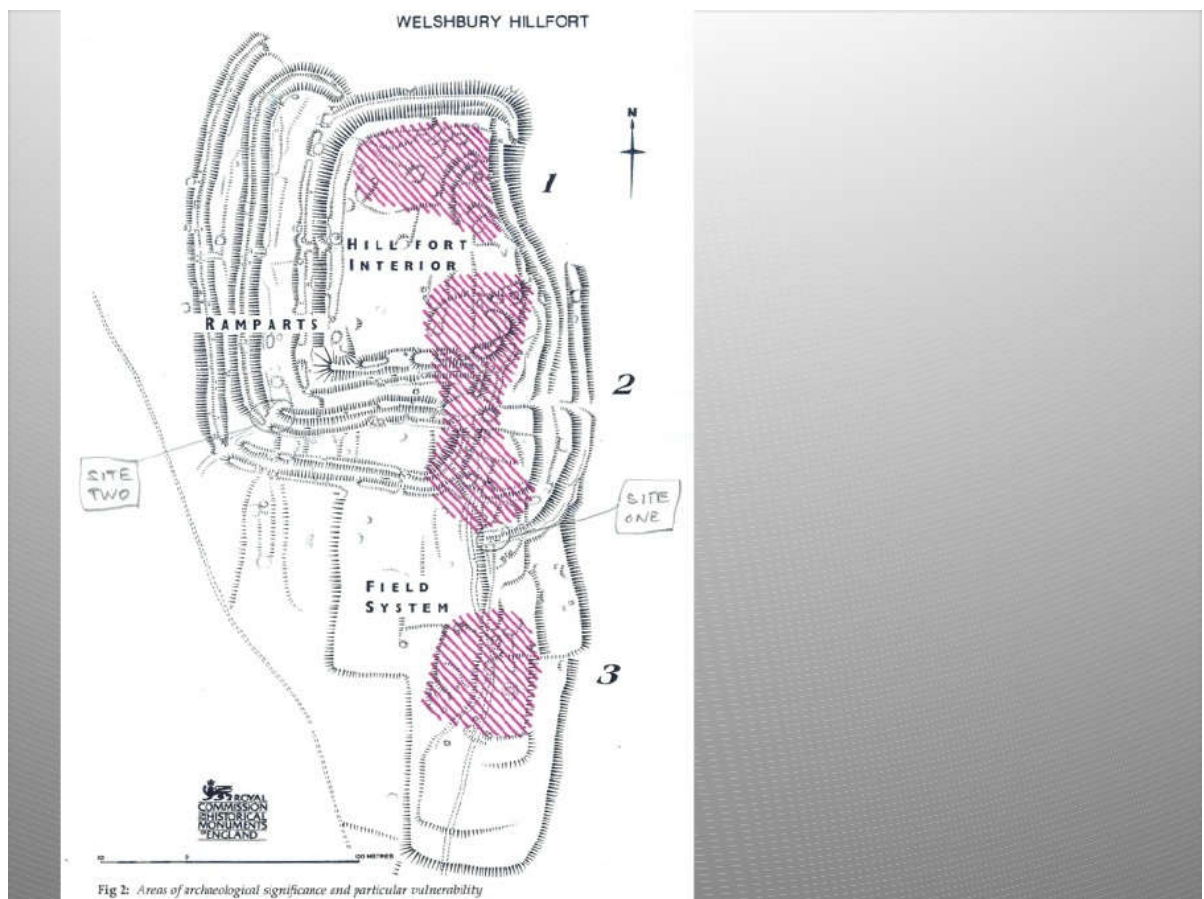
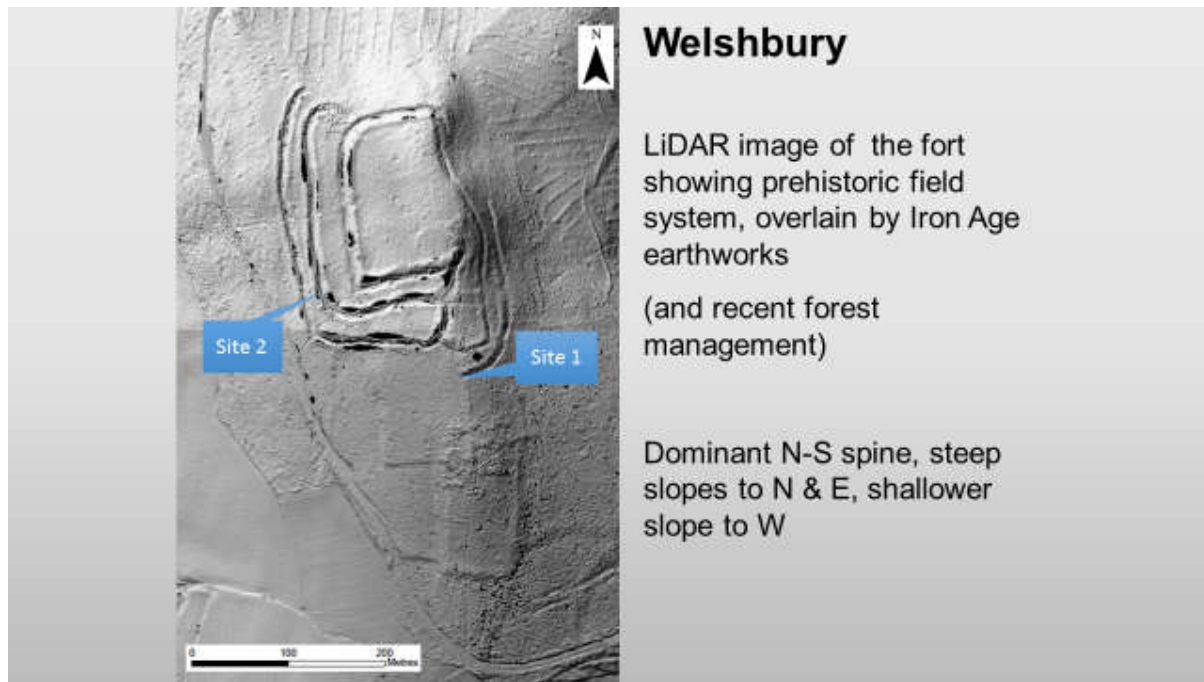
Date of map: 10/01/2013



© Crown Copyright. All Rights Reserved. Forestry Commission. 100025498 2010

**Fig. 1 Site location**





**Fig. 2 LIDAR image (© Forestry Commission) and plan (RCHME 1995)**  
**(‘Site 1’ is Trench 1 and ‘Site 2’ is Trench 2)**



**Fig. 3 Trench 1 before excavation – looking east**





**Fig. 4 Trench 1 before excavation – looking south along what is thought to be a late Bronze Age or early Iron Age field bank**





**Fig. 5 Trench 1 before excavation – looking north along a hillfort rampart**



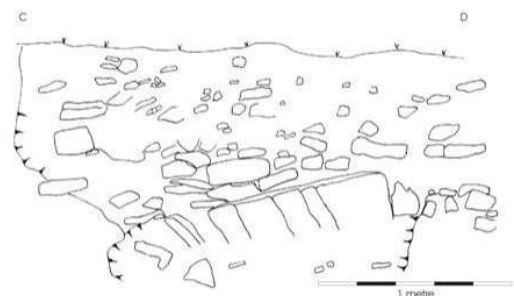


**Fig. 6 Trench 1 looking south**





**Fig. 7 Trench 1 South face**



Welshbury Hillfort, Littledean : Section C-D

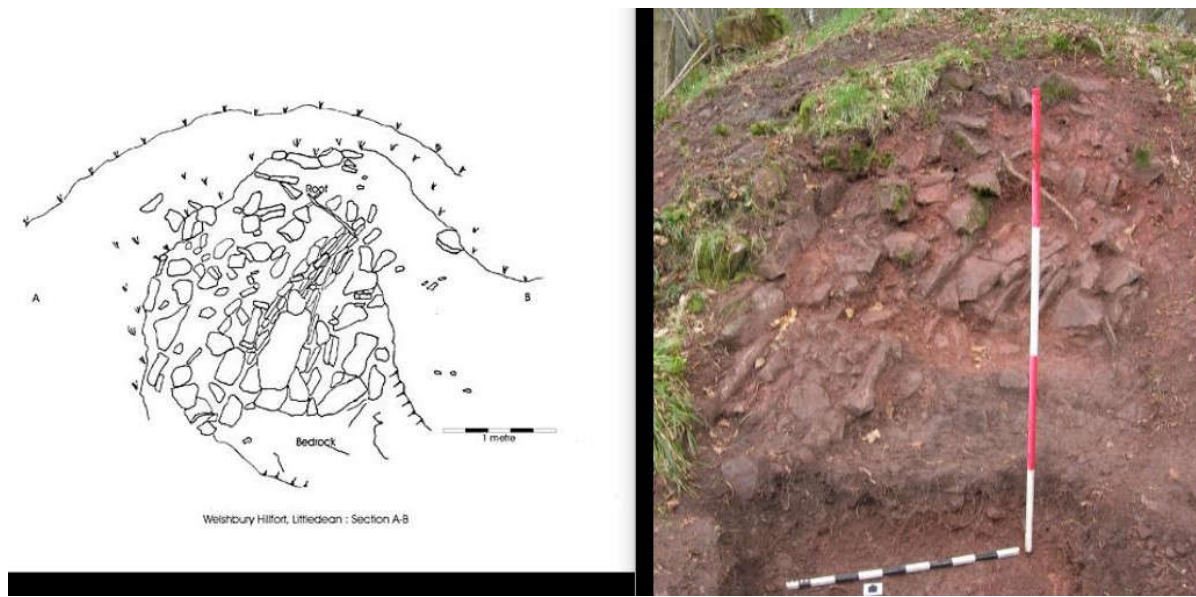
**Fig. 8 Trench 1 South face and section drawing (189m AOD)**





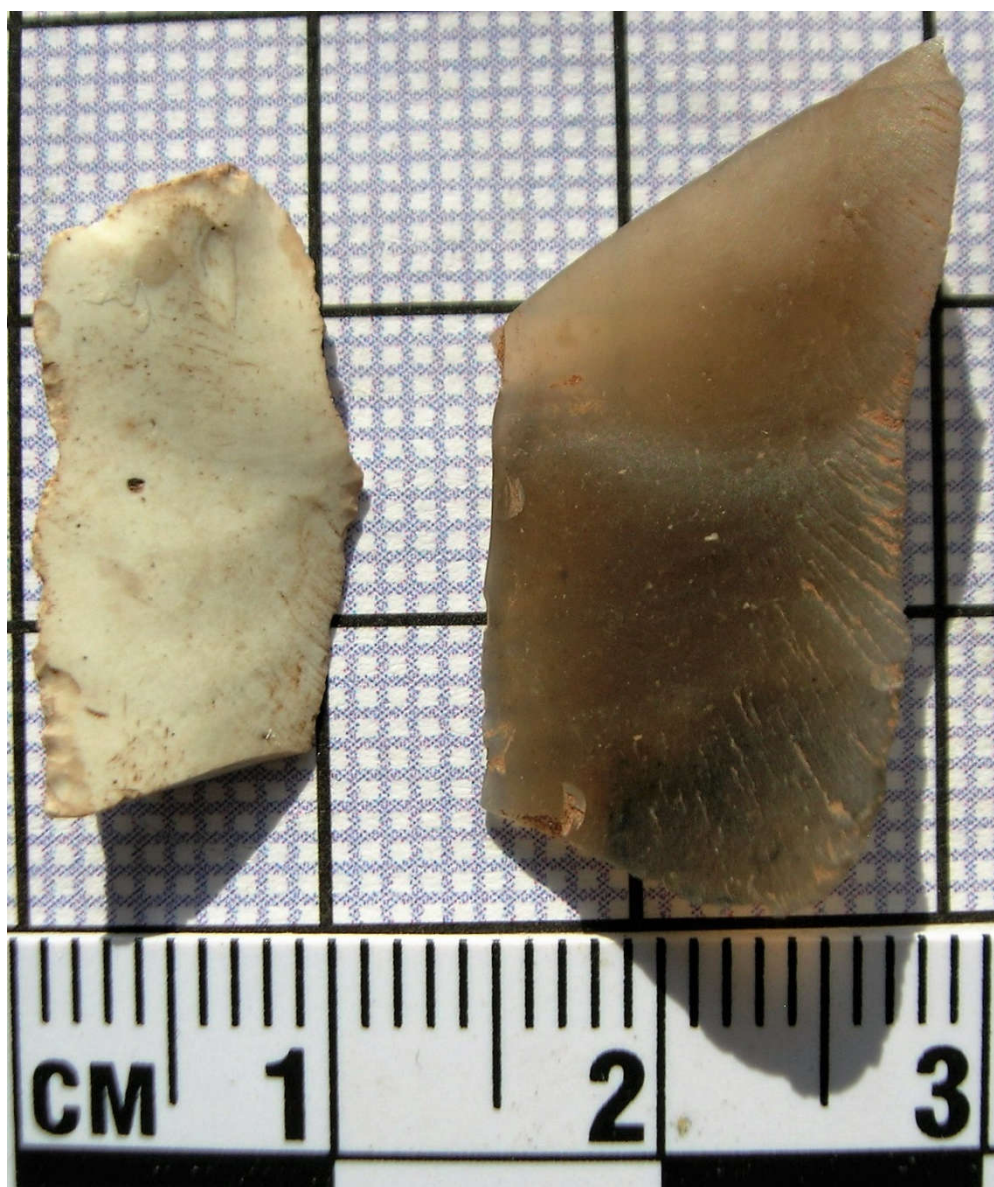
**Fig. 9 Trench 1 North face**





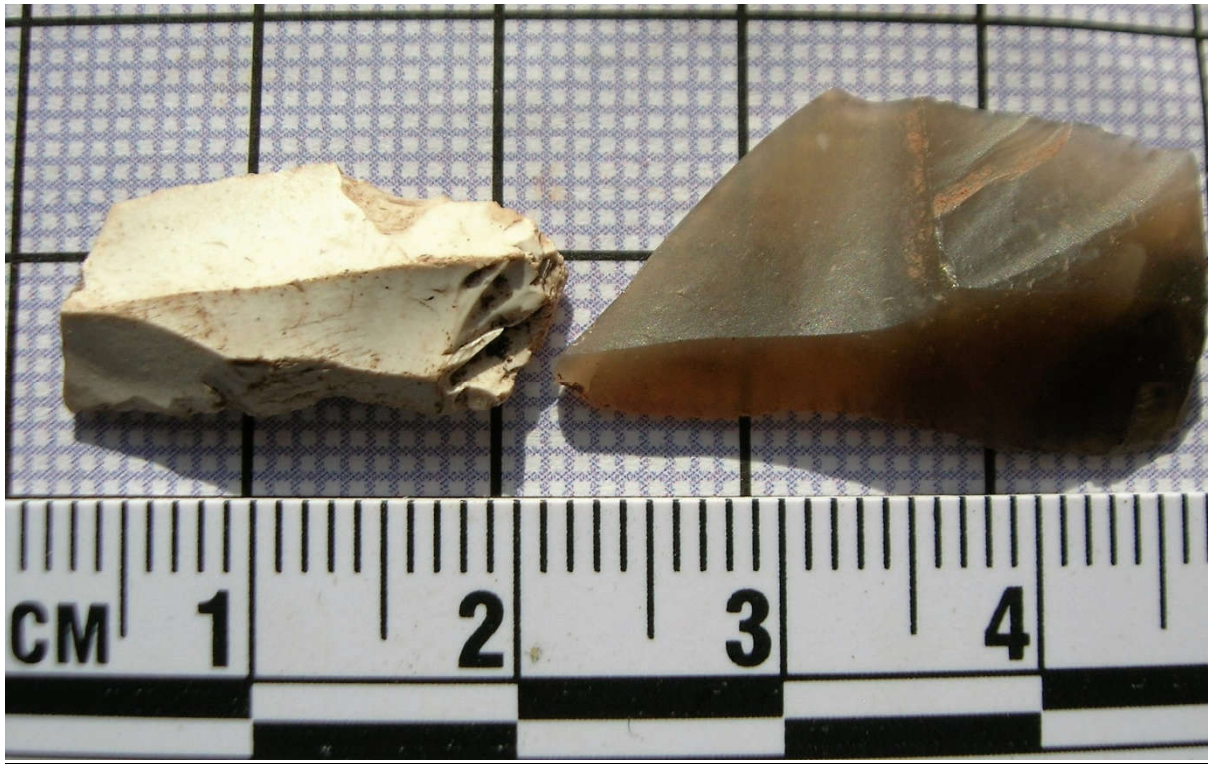
**Fig. 10 Trench 1 North face and section drawing (189m AOD)**





**Fig. 11 Trench 1 - Flint flakes**





**Fig. 12 Trench 1 - Flint flakes**





**Fig. 13 Trench 2 before excavation – looking north**





**Fig. 14 Trench 2 – west face (south face ‘step’ is also shown)**





**Fig. 15 Trench 2 – west face (large stone on left is sitting on the south face 'step')**





**Fig. 16 Trench 2 – East face**





**Fig. 17 Trench 2 – North face (north-eastern corner)**

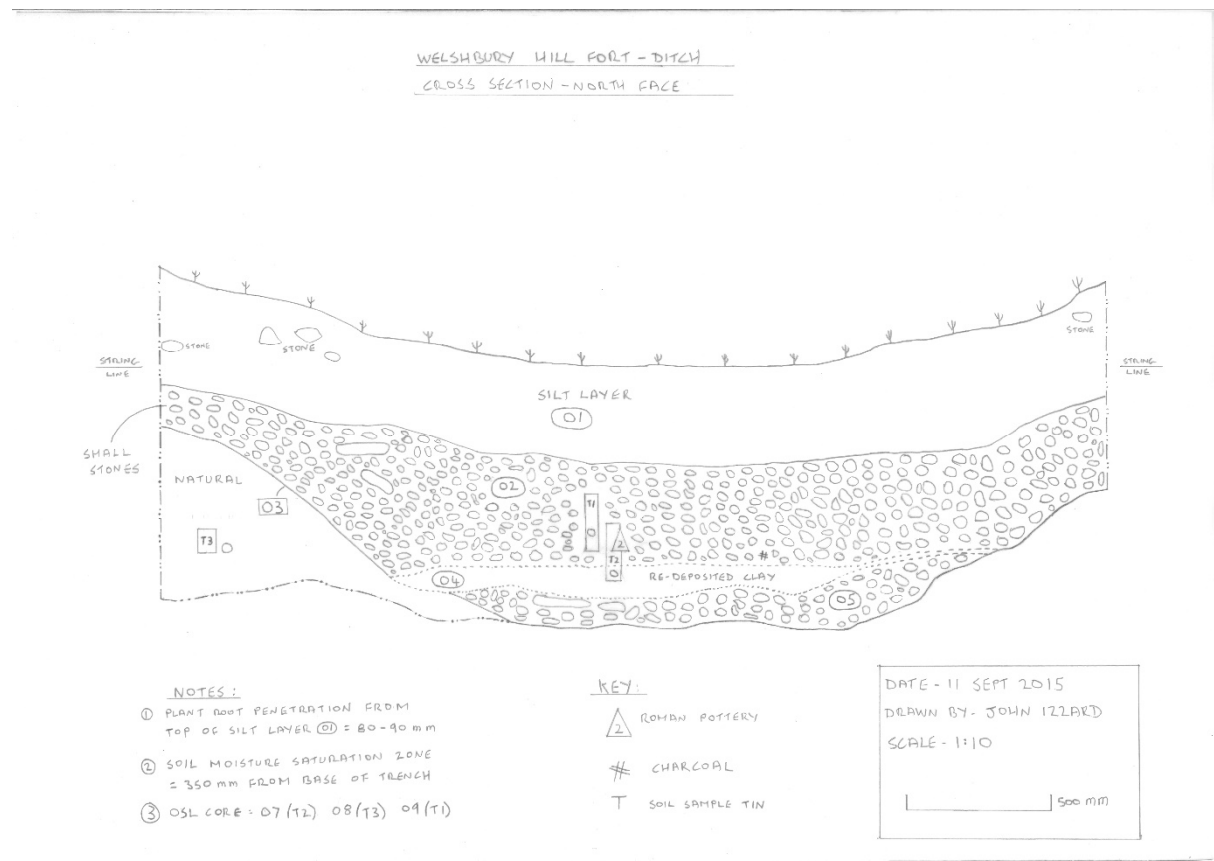


**Fig. 18 Trench 2 – North face**





**Fig. 19 Trench 2 – North face (centre only)**

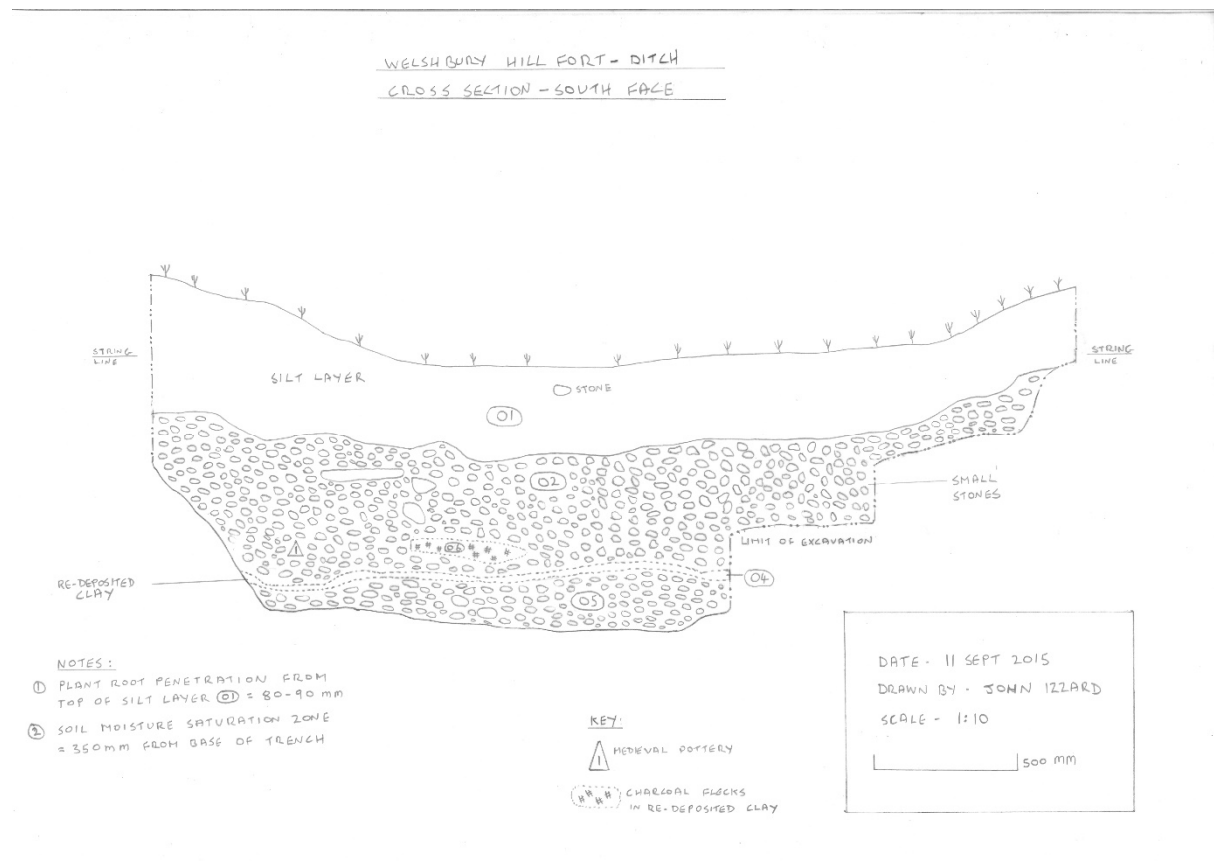


**Fig. 20 Trench 2 – North face section drawing (134m AOD)**





**Fig. 21 Trench 2 – South face eastern corner (location of medieval pottery is marked left and edge of 'step' can be seen on the right). Accumulated groundwater has been removed but some is left**



**Fig. 22 Trench 2 – South face section drawing (134m AOD)**





**Fig. 23 Trench 2 – Six Roman pottery sherds recovered in February 2015 from the north face at ~70cm depth – shown after cleaning**





**Fig. 24 Trench 2 – Five Roman pottery sherds recovered in February 2016 from the north face at ~70cm depth – shown after cleaning**





**Fig. 25 Trench 2 – Five medieval pottery sherds recovered from the south face**



**Fig. 26 Trench 2 – Medieval pottery sherd: base**