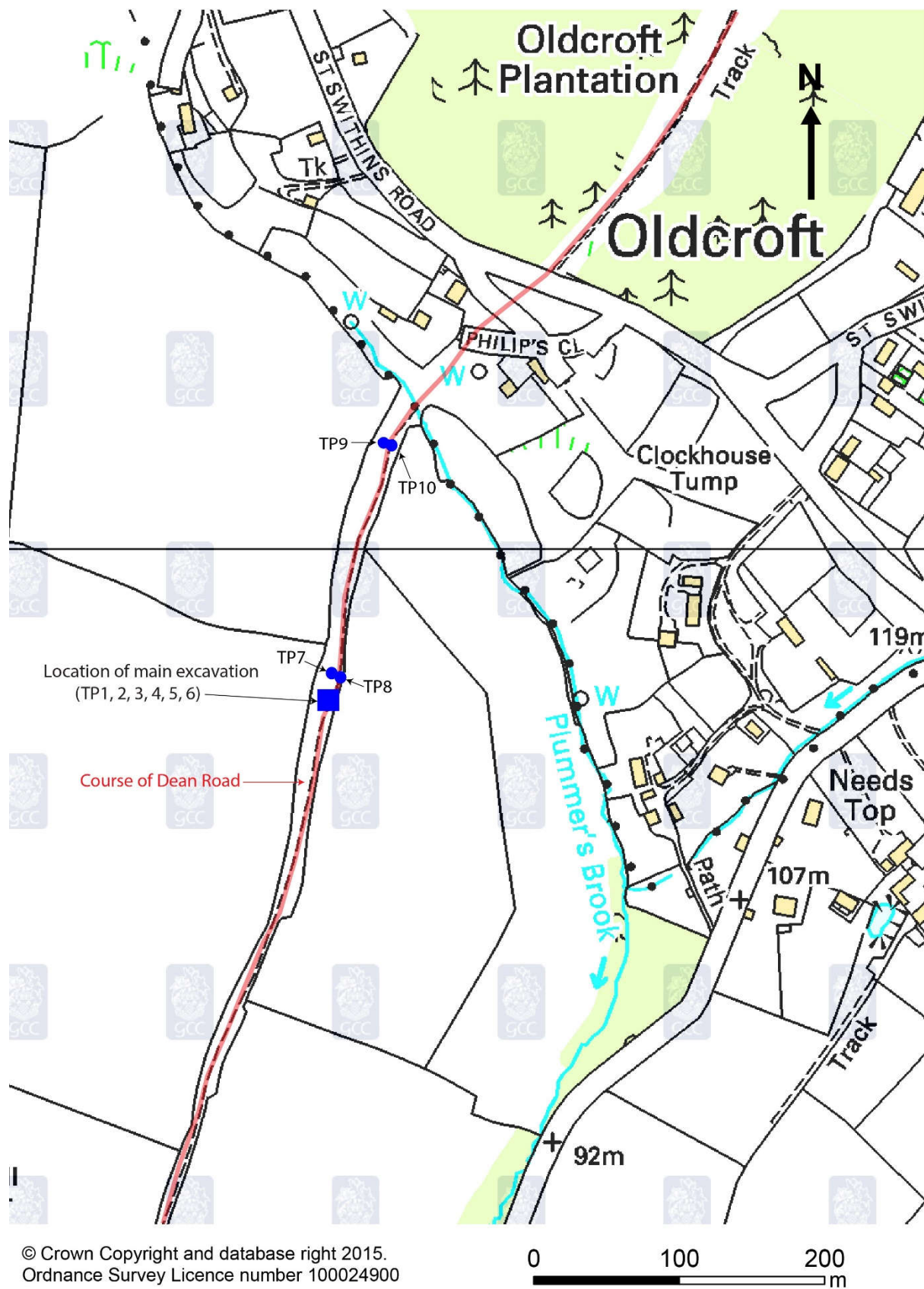


# **DEAN ROAD BETWEEN SOILWELL AND OLDCROFT, FOREST OF DEAN, GLOUCESTERSHIRE**

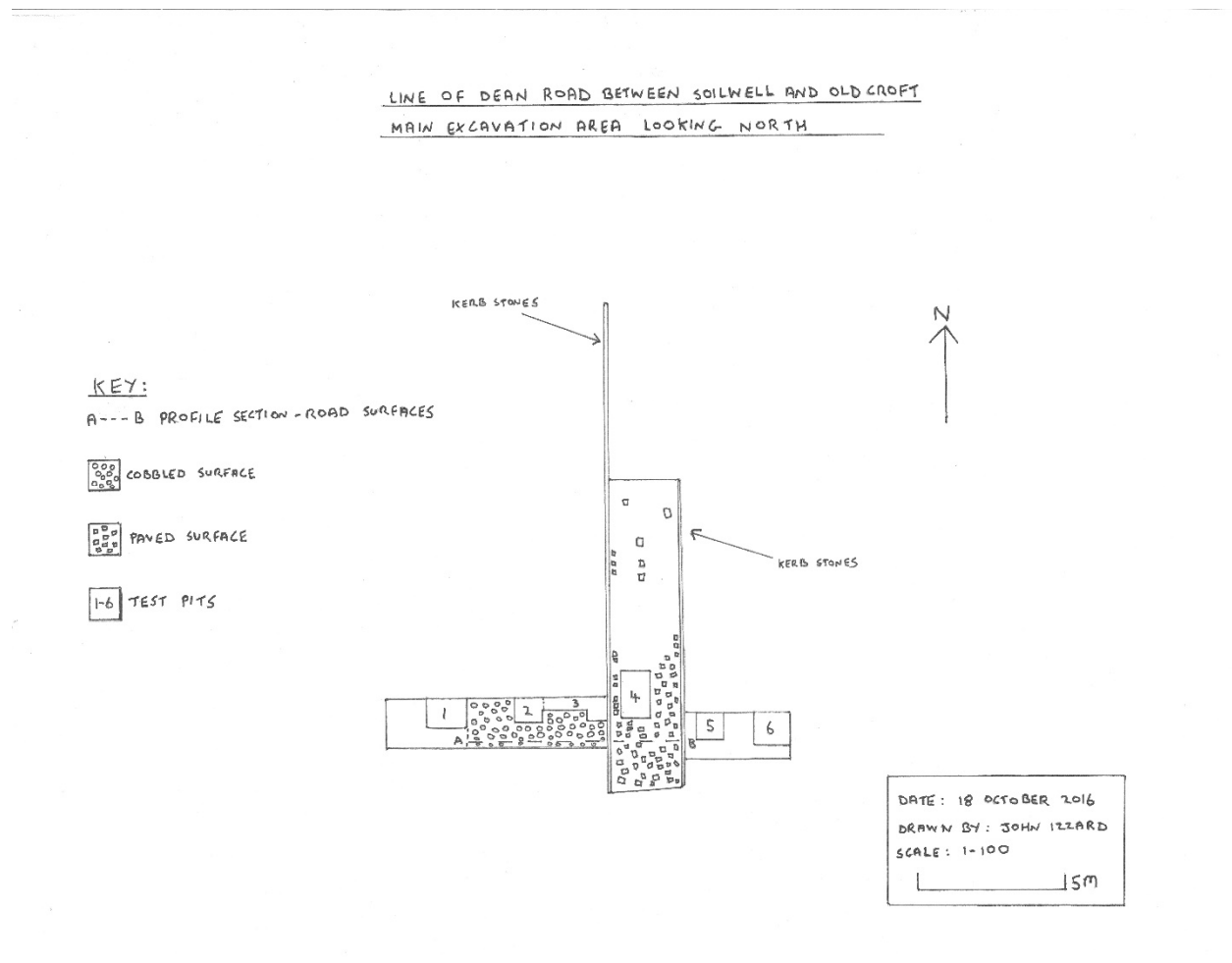
**WORK CARRIED OUT BETWEEN 25 JULY 2016 AND 23 OCTOBER 2016**

## **ILLUSTRATIONS**



**Fig. 1 Site location**

© Gloucestershire County Council: Reproduced from Hoyle 2016, Fig 1



**Fig. 2 Site plan**





**Fig. 3 Kerbed road looking north (TP 4 is also visible)**





**Fig. 4 Kerbed road looking south**





**Fig. 5 Kerb stones**





**Fig. 6 line of kerb stones looking north**





**Fig. 7 line of kerb stones looking south**





**Fig. 8 Cobbled surface looking east (TP1 is at the bottom of the photograph)**





**Fig. 9 Intersection of cobbled surface with kerbed road looking west (TP5 is at the bottom of the photograph)**





**Fig. 10 Test Pit 1 looking east**





**Fig. 11 Test Pit 5 looking north**



**Fig. 12 Test Pit 6 looking south**





**Fig. 13 Test Pit 2 looking west**





**Fig. 14 Test Pit 2 looking north**



**Fig. 15 Test Pit 2 - larger irregularly laid stones removed from sub base**





**Fig. 16 Test Pit 2 southern edge - cobbled surface**



**Fig. 17 Test Pit 3 looking east**





**Fig. 18 Test Pit 4 looking east**



**Fig. 19 Test Pit 4 looking south**





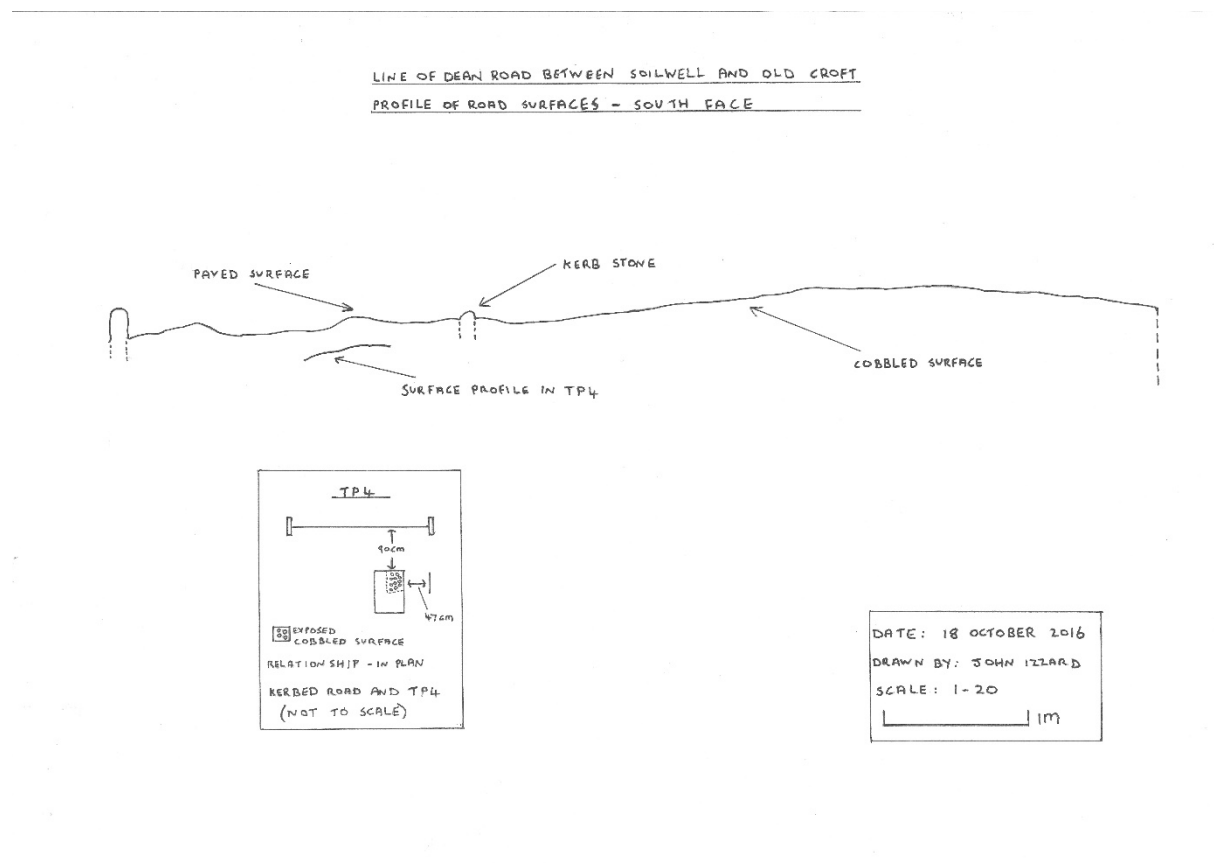
**Fig. 20 Test Pit 7 looking west**





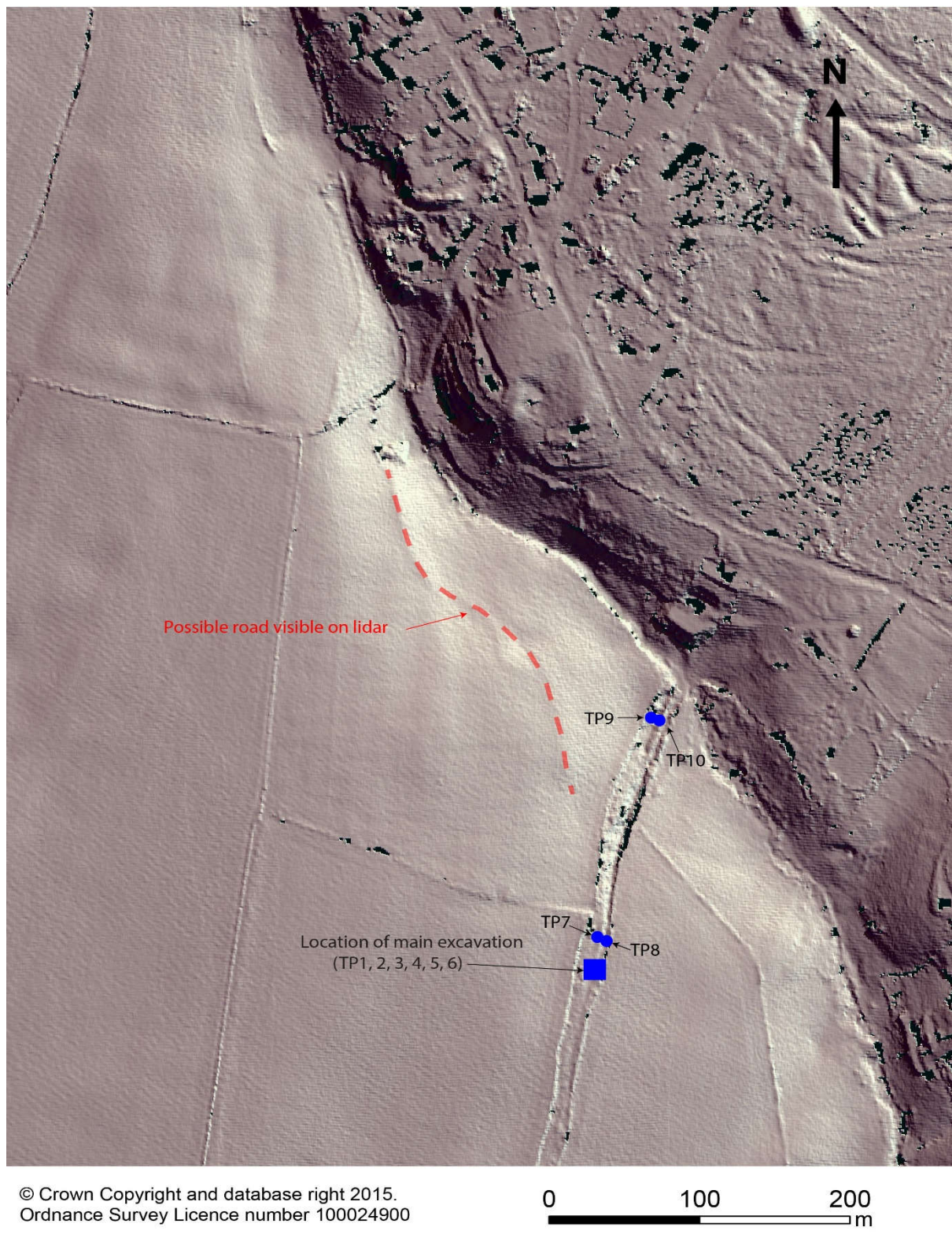
**Fig. 21 Test Pit 10 looking east**





**Fig. 22 Profile of road surfaces looking south including profile in TP4**





**Fig. 23 Possible divergence of routes**

© Gloucestershire County Council and Forestry Commission: Reproduced from Hoyle 2016, Fig 7





**Fig. 24 Some of the diggers**